

SIMILAR COMPLETED PROJECTS ATTACHMENT 3

MSDGC Little Miami WWTP 4-Mile Pump Station Reliability Improvements

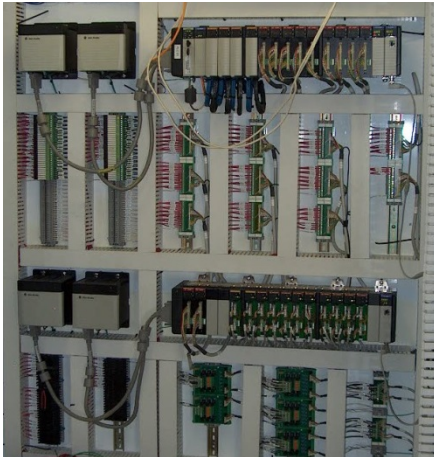
ASE teamed with Burgess & Niple to provide detailed engineering and PLC and SCADA systems configuration services for the Metropolitan Sewer District of Greater Cincinnati (MSDGC) Little Miami WWTP 4-Mile Pump Station Reliability Improvements Project. The project included the upgrade and addition of multiple electric actuators, a new seal water system, HVAC systems replacement, and new electrical, instrumentation and controls.



Services by ASE

ASE provided the detailed electrical, instrumentation and controls design for the project. During the construction phase, ASE provided PLC and SCADA Systems configuration, systems commissioning, checkout, and startup services.

Construction Administration activities related to the electrical and I&C upgrades were also provided by ASE.



The existing Rockwell ControlLogix PLC was modified to include additional I/O for the new controls. All new instrumentation and field controls were installed with the associated equipment upgrades.

Upgrades to the Little Miami Pump station were added to the project during the design phase. The existing hydraulic actuators were replaced with pneumatic actuators. ASE completed the required design, programming, and checkout of these systems.

All of the systems have been successfully checked out and the construction is now substantially complete. This was the first design and SCADA programming project that ASE performed for B&N and they were pleased with the services ASE provided.

Burgess & Niple provided a letter of reference for ASE, based on the success of this project. The reference letter is included in Attachment 1 for the Statement of Qualifications. ASE has continued to team with Burgess & Niple on other projects at MSDGC.

