

## SIMILAR COMPLETED PROJECTS ATTACHMENT 3

---

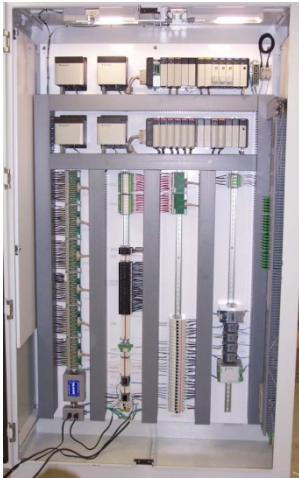
### MSDGC Little Miami WWTP Activated Sludge Thickening Modifications

ASE teamed with Brown & Caldwell to provide engineering services for the Metropolitan Sewer District of Greater Cincinnati (MSDGC) Little Miami WWTP Activated Sludge Thickening Modifications Project. The project included the complete upgrade of the Activated Sludge Thickening process, including all new electrical, instrumentation and controls.



### Services by ASE

*ASE provided the detailed electrical, instrumentation and controls design for the project.* The project utilized Rockwell ControlLogix PLCs and GE Proficy/iFIX SCADA systems. Ethernet communications were utilized for the control system network and ControlNet was used for the PLC remote I/O racks.



A new electrical room was constructed for the new Motor Control Center (MCC), the new PLC panel, and associated electrical equipment. A new dedicated HVAC system was installed for the electrical room in order to protect the electrical equipment from the harsh environment and to extend the life of the equipment. A new PLC panel was installed along with all new instrumentation and field controls. All electrical and I&C components in the building were replaced.

During the construction phase, *ASE assisted with the Construction Administration activities related to the electrical and I&C upgrades.* ASE also provided coordination with the Systems Integrator to ensure compliance with MSDGC's SCADA Programming Standards.

The construction was completed in 2009. This was the first major project that ASE performed with Brown & Caldwell.

*Brown & Caldwell provided a letter of reference for ASE, based on the success of over 18 projects for which ASE has teamed with them over the last 7 years.* The reference letter is included in Attachment 1 for the Statement of Qualifications.

---

